

Injury attendances to North Manchester General Hospital Emergency Department

January to December 2011

This report summarises recorded injury attendances to North Manchester General Hospital Emergency Department (ED) between January and December 2011.

Between January and December 2011 there were 32,274 injury attendances to North Manchester General Hospital ED. Males accounted for over half (54%) of all attendances. The month with the highest attendances was May (n=2,991) with December (n=2,362) having the lowest attendances (**Figure 1**). The majority (61%) of attendances were recorded as other injury. Of the specified injury groups falls (21%) accounted for the highest proportion followed by road traffic collision (RTC) (7%) (**Table 1**).

For all injuries the highest proportion of attendances were for persons aged 5 to 19 (25%) and 20 to 34 years (23%) (**Figure 2**). Over a third (36%) of fall attendees were aged 65 or over. Almost two-fifths (39%) of deliberate self-harm (DSH) attendees were aged 20 to 34 years (**Figure 3**).

Table 2 shows the location of the incident of injury attendances. Over a half (52%) of injuries occurred in the home. Nearly a fifth (15%) of injuries occurred in a public place with a smaller proportion occurring at an educational establishment (5%) or at work (4%). Almost six in ten (58%) falls occurred in the home.

Table 3 shows the ethnicity of attendees to North Manchester General Hospital ED. Over three-quarters (78%) were white, 6% were Pakistani and 4% were black.

The disposal of a patient can give an indication of the severity of the injuries sustained. Over six in ten (61%) attendees were discharged, almost three in ten (28%) were referred and 10% were admitted (**Table 4**). Almost eight in ten (77%) RTC attendees were discharged (**Table 5**).

Table 6 shows the arrival method of attendances at North Manchester General Hospital ED. Seven in ten (70%) arrived by private transport while nearly a fifth (18%) arrived by ambulance.

Table 7 presents data for assault attendances to North Manchester ED. Over seven in ten (72%) of assault attendees were male and nearly a half (47%) were aged 20 to 34 years. Two-fifths (40%) of assaults occurred in a public place.

Figure 1: North Manchester General Hospital ED: Total injury attendances by gender and month, January to December 2011

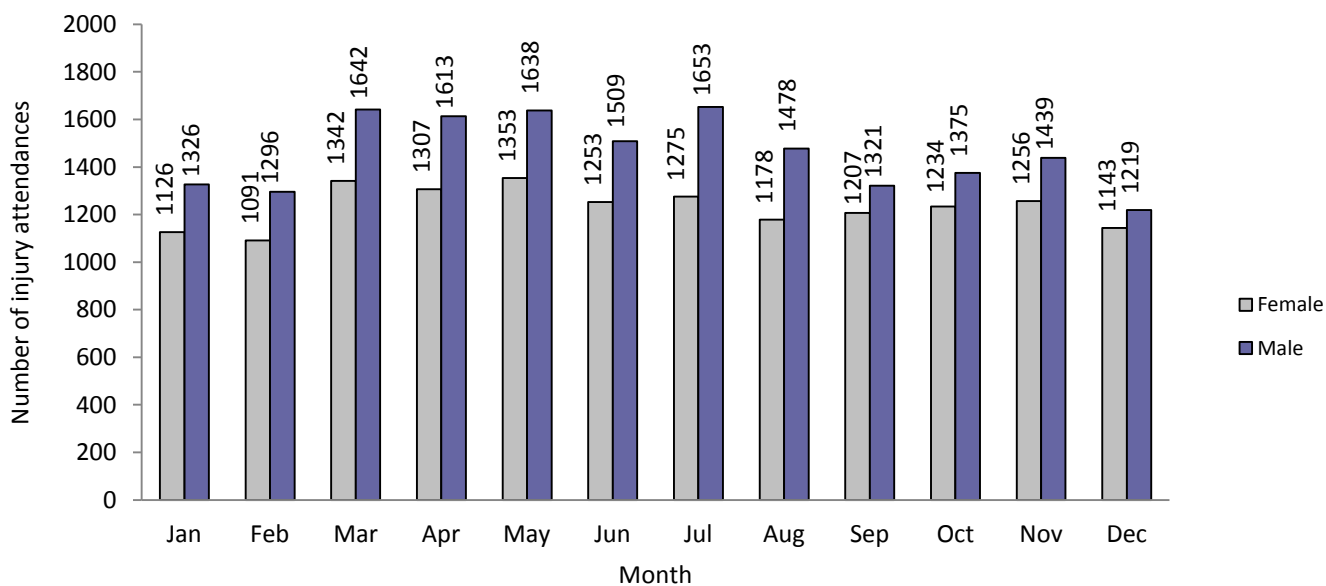
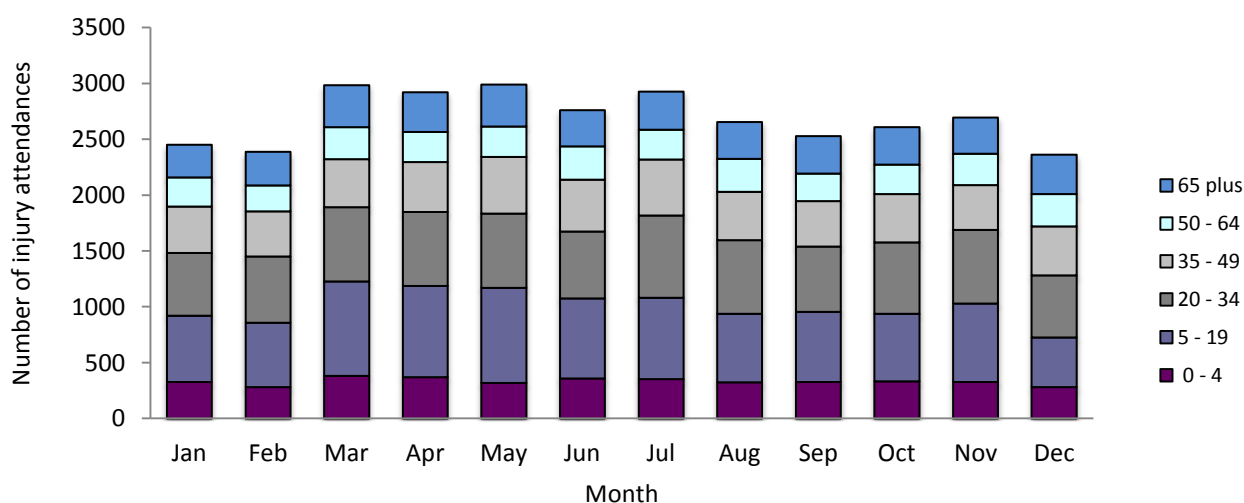


Table 1: North Manchester General Hospital ED: Total injury attendances by injury group and month, January to December 2011^{1*}

Injury group	Jan	Feb	Mar	Apr	May	Jun	Jul	Aug	Sep	Oct	Nov	Dec	Total	%
Other injury	1499	1513	1958	1733	1927	1776	1755	1624	1542	1532	1647	1301	19807	61
Fall	512	468	613	716	557	548	622	531	538	589	564	603	6861	21
RTC	190	183	165	163	206	158	229	221	192	204	191	205	2307	7
Assault	126	107	116	150	138	97	129	91	117	131	165	125	1492	5
Burns and scalds	58	63	65	59	62	81	70	65	53	66	56	68	766	2
Bites and stings	38	24	38	64	57	77	97	89	63	65	49	34	695	2
DSH	29	29	29	35	44	25	26	35	23	22	23	26	346	1
Total	2452	2387	2984	2920	2991	2762	2928	2656	2528	2609	2695	2362	32274	100

*Percentages may not equal 100 due to rounding.

Figure 2: North Manchester General Hospital ED: Total injury attendances by age group and month, January to December 2011



¹ Due to low numbers firework injury (n=6), sports injury (n<5) and electrical accident (n=24) have been included in other injury.

Figure 3: North Manchester General Hospital ED: Total injury attendances by age group and injury group (excluding other injury), January to December 2011

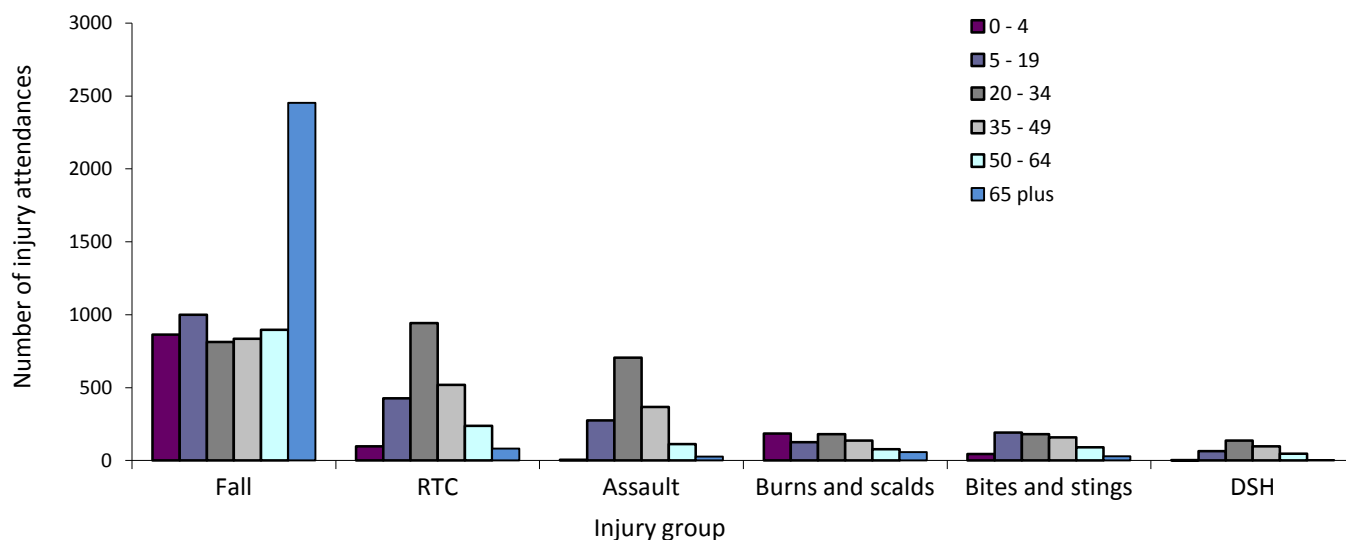


Table 2: North Manchester General Hospital ED: Total injury attendances by location of incident and injury group, January to December 2011^{2*}

Location	Assault		Bites and stings		Burns and scalds		DSH		Fall		Other injury		RTC		Total	
	n	%	n	%	n	%	n	%	n	%	n	%	n	%	n	%
Home	395	26	313	45	432	56	237	68	3953	58	11123	56	239	10	16692	52
Other	376	25	136	20	69	9	58	17	685	10	3378	17	1920	83	6622	21
Public place	600	40	165	24	27	4	32	9	1423	21	2366	12	83	4	4696	15
Educational establishment	25	2	11	2	11	1	***	1	234	3	1288	7	***	0	1573	5
Not recorded	42	3	45	6	164	21	16	5	418	6	803	4	58	3	1546	5
Work	54	4	25	4	63	8	***	0	148	2	849	4	***	0	1145	4
Total	1492	100	695	100	766	100	346	100	6861	100	19807	100	2307	100	32274	100

*Percentages may not equal 100 due to rounding.

Table 3: North Manchester General Hospital ED: Total injury attendances by ethnicity and month, January to December 2011³

Ethnicity	Jan	Feb	Mar	Apr	May	Jun	Jul	Aug	Sep	Oct	Nov	Dec	Total	%
White	1871	1859	2322	2260	2323	2155	2236	2103	1950	2026	2124	1822	25051	78
Pakistani	158	134	186	181	183	183	217	175	185	161	157	150	2070	6
Black	115	115	116	139	138	108	109	98	90	96	118	96	1338	4
Not stated	102	95	126	119	108	94	117	95	100	110	97	107	1270	4
Any other ethnic group	105	79	99	98	105	101	114	75	89	95	94	96	1150	4
Mixed	33	31	40	41	60	37	49	42	47	55	35	38	508	2
Any other Asian background	46	46	58	44	36	50	39	28	28	38	35	25	473	1
Indian	10	15	27	23	17	24	22	15	19	12	21	15	220	1
Chinese	8	11	8	8	12	5	14	13	14	7	8	10	118	0
Not recorded	***	***	***	***	***	***	6	***	***	***	6	***	43	0
Bangladeshi	***	***	***	***	***	***	5	***	***	***	0	***	33	0
Total	2452	2387	2984	2920	2991	2762	2928	2656	2528	2609	2695	2362	32274	100

² Please note that all numbers less than five have been suppressed in line with patient confidentiality and if there is only one number <5 in a category then two numbers will be suppressed at the next level.

³ White = Irish, British, other white background; Mixed = white and black, white and Asian, mixed any other; Other = any other ethnic group, any other Asian background; Black = African, Caribbean, other black.

Table 4: North Manchester General Hospital ED: Total injury attendances by method of disposal and month, January to December 2011^{4*}

Disposal	Jan	Feb	Mar	Apr	May	Jun	Jul	Aug	Sep	Oct	Nov	Dec	Total	%
Discharged	1450	1367	1798	1682	1726	1674	1741	1662	1626	1669	1687	1528	19610	61
Referral/follow-up	696	721	865	877	931	770	820	695	619	647	753	561	8955	28
Admitted	250	254	271	271	277	271	306	256	230	249	228	233	3096	10
Other	56	45	50	90	57	47	61	43	53	44	27	40	613	2
Total	2452	2387	2984	2920	2991	2762	2928	2656	2528	2609	2695	2362	32274	100

*Percentages may not equal 100 due to rounding.

Table 5: North Manchester General Hospital ED: Total injury attendances by method of disposal and injury group, January to December 2011*

Disposal	Assault		Bites and stings		Burns and scalds		DSH		Fall		Other injury		RTC		Total	
	n	%	n	%	n	%	n	%	n	%	n	%	n	%	n	%
Discharged	771	52	435	63	297	39	155	45	3587	52	12598	64	1767	77	19610	61
Referral/follow-up	283	19	238	34	362	47	44	13	1603	23	6048	31	377	16	8955	28
Admitted	248	17	***	3	***	10	77	22	1487	22	1077	5	112	5	3096	10
Other	190	13	***	0	***	4	70	20	184	3	84	0	51	2	613	2
Total	1492	100	695	100	766	100	346	100	6861	100	19807	100	2307	100	32274	100

*Percentages may not equal 100 due to rounding.

Table 6: North Manchester General Hospital ED: Total injury attendances by mode of arrival and month, January to December 2011*

Arrival mode	Jan	Feb	Mar	Apr	May	Jun	Jul	Aug	Sep	Oct	Nov	Dec	Total	%
Private transport	1715	1636	2145	2084	2150	1917	2051	1889	1780	1774	1919	1561	22621	70
Ambulance	472	421	506	559	519	468	546	438	466	511	458	519	5883	18
Other	78	110	148	66	86	105	84	105	82	84	71	83	1102	3
Taxi	51	70	52	59	72	74	76	52	52	68	79	57	762	2
Not recorded	34	48	43	60	73	82	64	79	56	70	73	61	743	2
Foot	36	42	34	51	30	43	48	44	29	36	35	24	452	1
Public transport	36	40	41	29	35	45	30	32	42	35	37	27	429	1
Police	11	10	7	10	15	16	14	13	6	16	12	21	151	0
Unknown	15	8	***	***	8	7	11	***	12	13	9	9	99	0
Work transport	***	***	***	***	***	***	***	***	***	***	***	***	30	0
Helicopter	***	***	***	***	***	***	***	***	***	***	***	***	2	0
Total	2452	2387	2984	2920	2991	2762	2928	2656	2528	2609	2695	2362	32274	100

*Percentages may not equal 100 due to rounding.

⁴ Admitted=admitted to hospital/became a lodged patient of the same health care provider; Discharged=discharged - did not require any follow up treatment; Referral/follow-up =discharged - follow up treatment to be provided by GP, referred to ED clinic, referred to fracture clinic, referred to other out-patient clinic, referred to other health care professional; Other=died in department, left department before being treated, left department having refused treatment, other.

Table 7: North Manchester General Hospital ED: Total injury attendances and assault attendances by gender, incident location, age group and day/time of attendance, January to December 2011*

	Assaults (n=1,492)	All injuries (n=32,274)
Gender	%	%
Female	28	46
Male	72	54
Location		
Public place	40	15
Home	26	52
Other	25	21
Work	4	4
Educational establishment	2	5
Not recorded	3	5
Age group		
0 - 4	0	12
5 - 19	18	25
20 - 34	47	23
35 - 49	25	16
50 - 64	8	10
65 plus	2	13

*Percentages may not equal 100 due to rounding

Author: Ian Warren, Published: February 2012

For further information please contact: Centre for Public Health, Research Directorate, Liverpool John Moores University, 2nd Floor, Henry Cotton Building, 15-21 Webster Street, Liverpool, L3 2ET, Tel: 0151 231 4513 or Email: i.j.warren@ljmu.ac.uk

Website: www.tiig.info (data requests should be made through the website)